

Dear Daniel,

Here's a "Quick n Dirty" procedure for disassembling the electronics tray of a standalone Xynergi Controller.

We aim to have a nicer PDF version together shortly... ☺

(Quick PDF version attached if the embedded images don't come thru OK...)

You will NEED

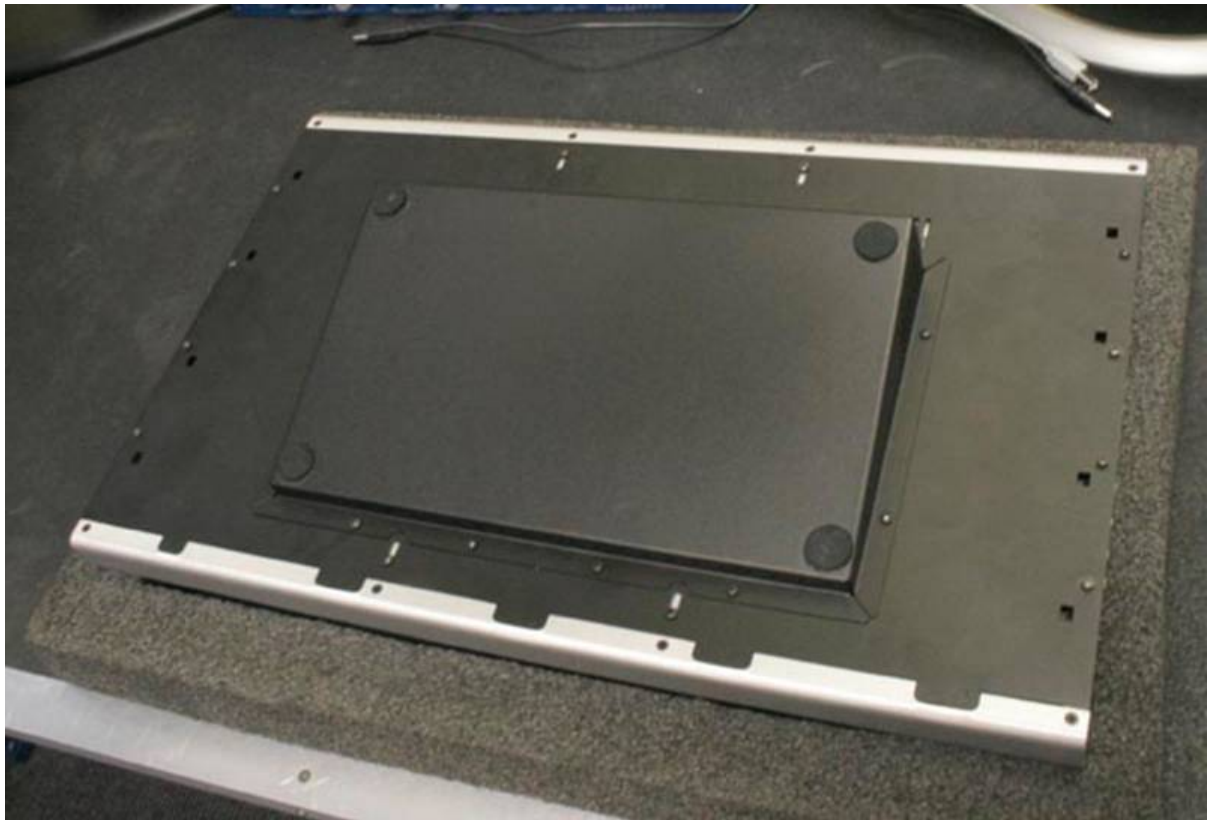
- a quiet static-safe workarea
- #1 Pozi driver

Please note that this procedure can KILL a Xynergi if not performed correctly!!!

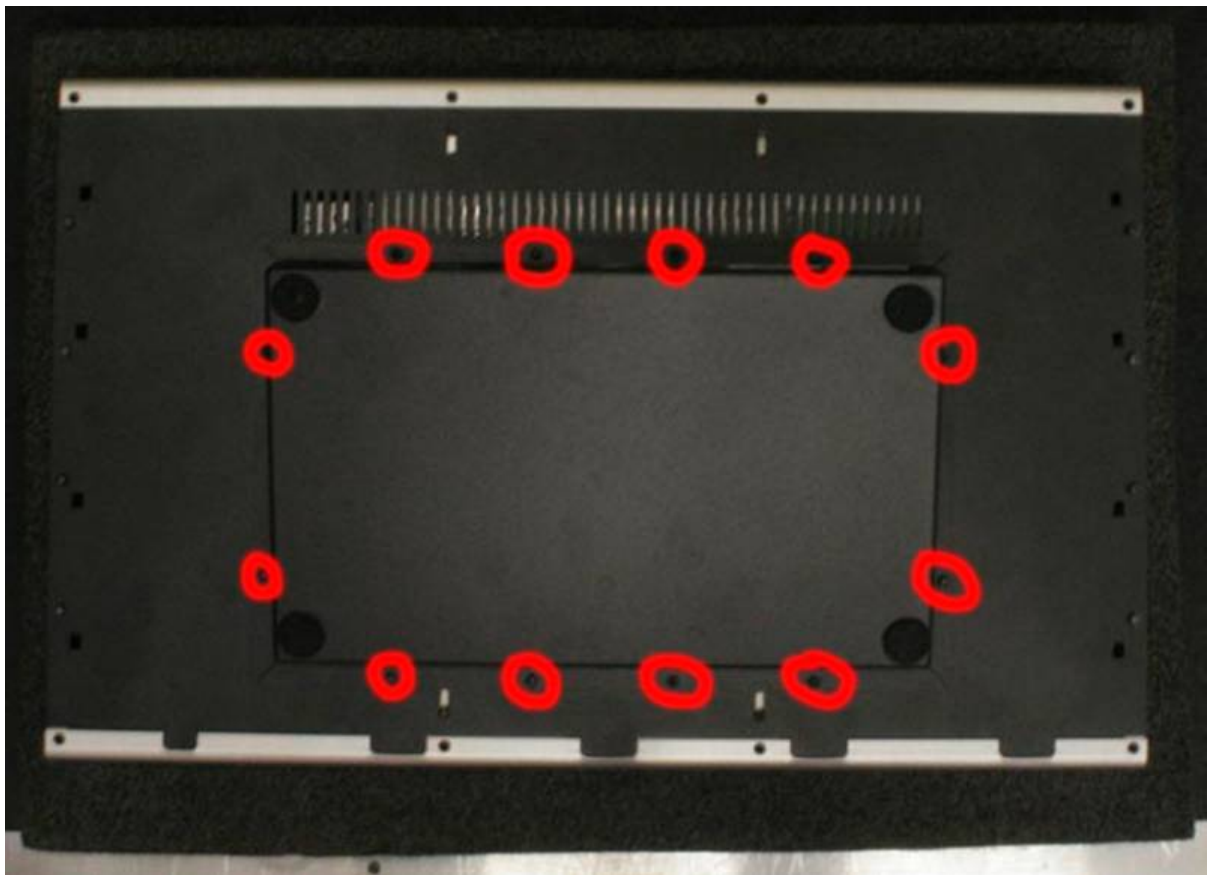
1 – Obtain your Xynergi



2 – Make sure you have some suitable padding, and flip the Xynergi Face DOWN



3 – remove the screws indicated

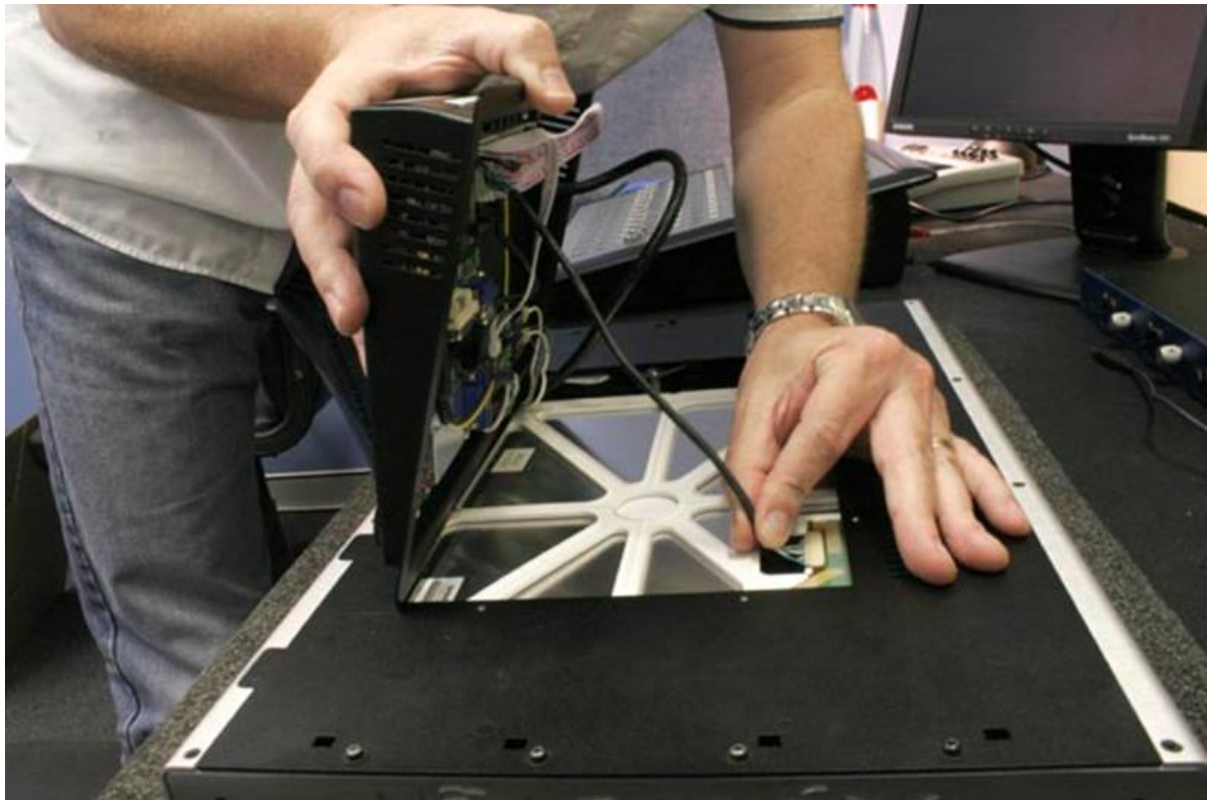


4 – CAREFULLY hinge the tray up <TOWARDS> you

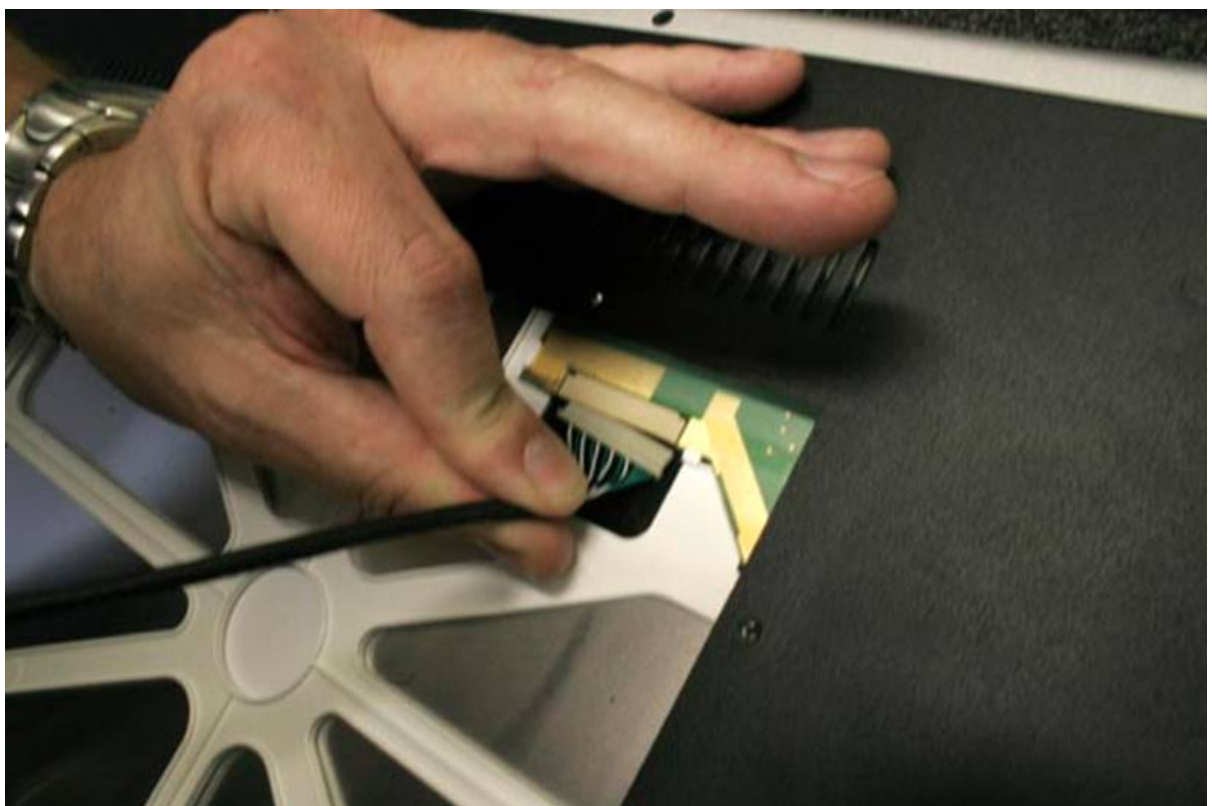
There are SHORT CABLES which may be TERMINALLY DAMAGED if you do this incorrectly, Too FAST, or with TOO MUCH FORCE!



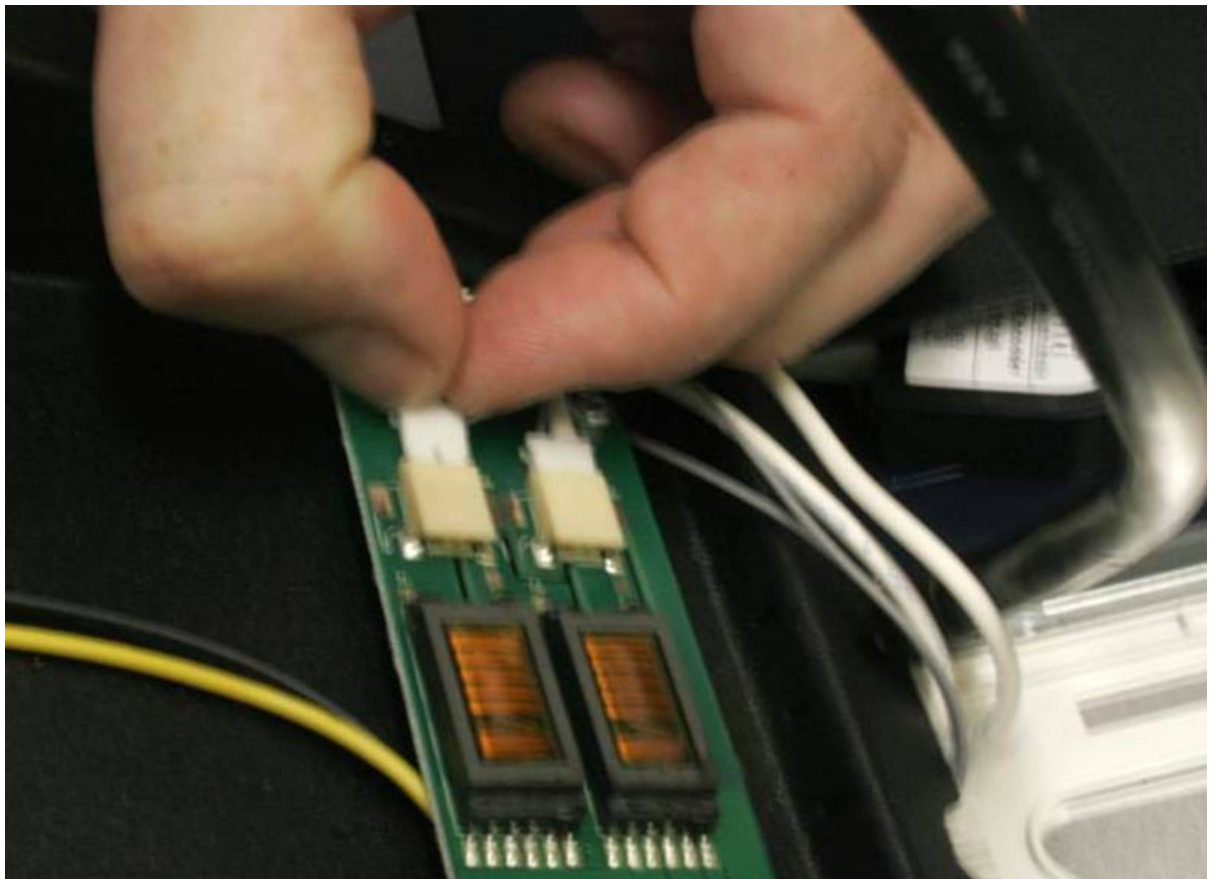
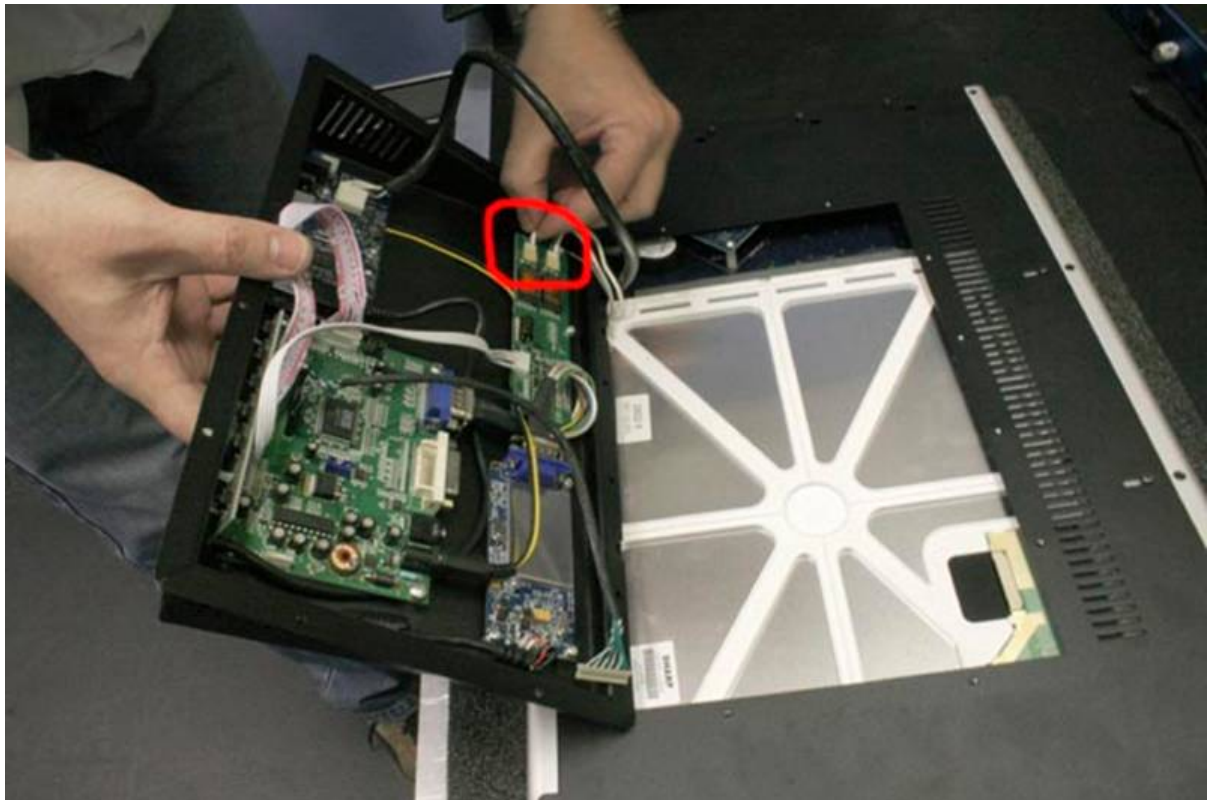
5 – STOP when you get to 90 degrees!!! DO NOT EXCEED 90 DEGREES!!!!



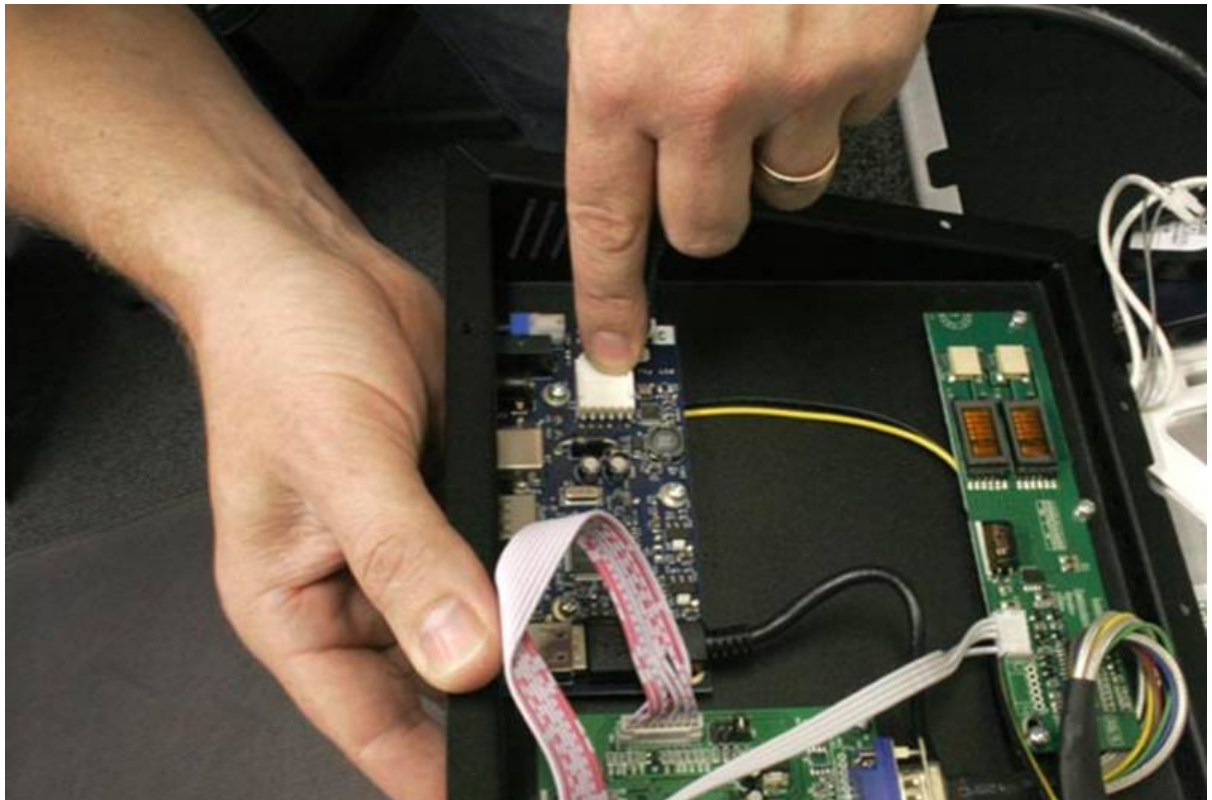
6 – CAREFULLY disconnect the TFT drive cable connector



7 – CAREFULLY disconnect the 2 (TWO) HT lines

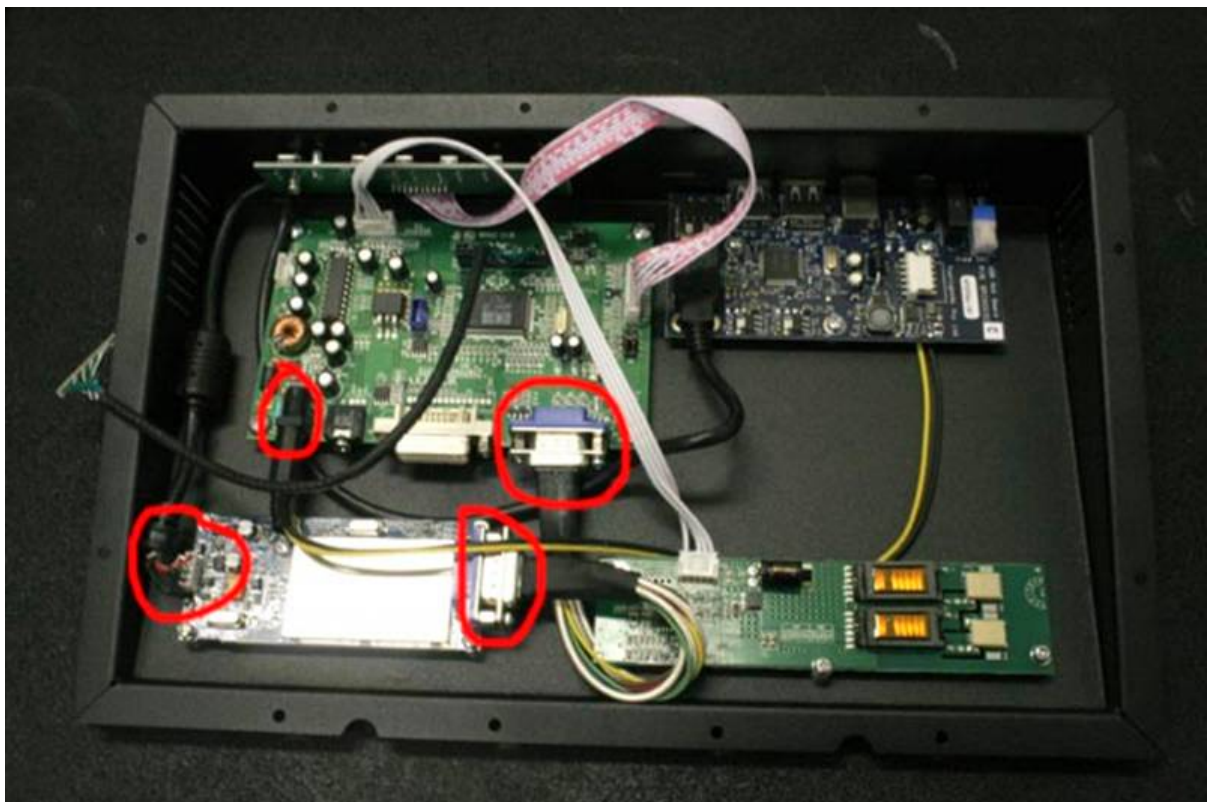


8 – Disconnect the USB cable



9 – You should now be able to remove the tray and all associated electronics away from the Xynergi screen, and set it aside on the workbench.

Please check the connections noted, and generally make sure that your Xynergi tray circuits and cables look like the ones shown below...



10 – Re-assembly is essentially the same process in reverse order. Take Special care not to crush, crimp, or otherwise damage the cables as you mate the tray back onto the Xynergi Screen assembly.

Hope this helps!!!

Regards,
John D